

SOUTHERN SHUTTER CO. 1964

LOOK BOOK COLLECTION



Exterior 2.5"
Movable Louvered Shutters



Introduction

8 Our History

Exterior Shutters

16 Fixed Louver

Wood and Premium Fiberglass Composite

22 Movable Louver

26 Paneled & Combination

Wood and Premium Fiberglass Composite

32 Board & Batten

Wood and Composite

36 Bahama

Wood and Premium Fiberglass Composite

40 Customization

41 Hardware

Interior Window Treatments

44 Shutters, Shutter Sets

Millwork

52 Paneled, Louvered & Screen Doors

55 Ventilators



DesignLine 1-7/8" Louver
with False Control Rods



“The details are not the details.
They make the design.”

– Charles Eames





Interior Movable Louver
1-7/8" Louver





“We shape our homes and
then our homes shape us.”

– Winston Churchill

OUR HISTORY

Southern Shutter Company, founded in 1964 as a family-owned business, remains so 60 years later. Southern Shutter Company has an earned reputation for producing custom interior and exterior window treatments of the highest quality – maintaining the highest standards in both materials and workmanship.

**Everything we build is hand crafted
and built to last a lifetime.**

Timeless dedication to excellence in manufacturing, materials and workmanship make Southern Shutter Company the national leader in the shutter industry.



We're driven by the passion for creating pieces as functional as they are beautiful. Each product is a hand-crafted piece of art built to last a lifetime.

PREMIUM FIBERGLASS COMPOSITE AND WOOD SPECIES AVAILABLE



DESIGNED TO LAST A LIFETIME

Southern Shutter Company products are handcrafted by shutter professionals in our Montgomery, Alabama factory utilizing select materials and unmatched standards. Sixty years of manufacturing experience combined with state-of-the-art technology enable production in a wide variety of standard customizable designs as well as historic matching/replication down to the last detail.

Our Premium Fiberglass Composite collection is constructed with the same attention to detail, resulting in a premium, rot free, alternative to wood.



THOUGHTFULLY
CRAFTED

_____ **A house is not a home
until it reflects those inside.**

Specialized CNC equipment coupled with AutoCAD design enables Southern Shutter Company to offer almost unlimited customization throughout the manufacturing process. Customers can pre-finish projects with a choice of national paint brand colors or match to swatch. Both functional and simulated function shutters require the right hardware to enhance appearance of any facade. Let our shutter professionals thoughtfully craft your quality shutter project.



With seven standard interior shutter designs, 17 standard exterior shutter designs and ventilators of all configurations, Southern Shutter Company will meet almost any architectural specifications for custom orders.

EXTERIOR SHUTTERS

Fixed Louver Shutters

Wood and Premium Fiberglass Composite

Paneled & Combination Shutters

Wood and Premium Fiberglass Composite

Movable Louver Shutters

Board & Batten Shutters

Wood and Composite

Bahama Shutters

Wood and Premium Fiberglass Composite



TOP: Standard Fixed Louver

BOTTOM LEFT: 1 7/8 Louver DesignLine with Copper Cap

BOTTOM RIGHT: Premium Fiberglass Composite Fixed Louver

FIXED LOUVER *SHUTTERS*



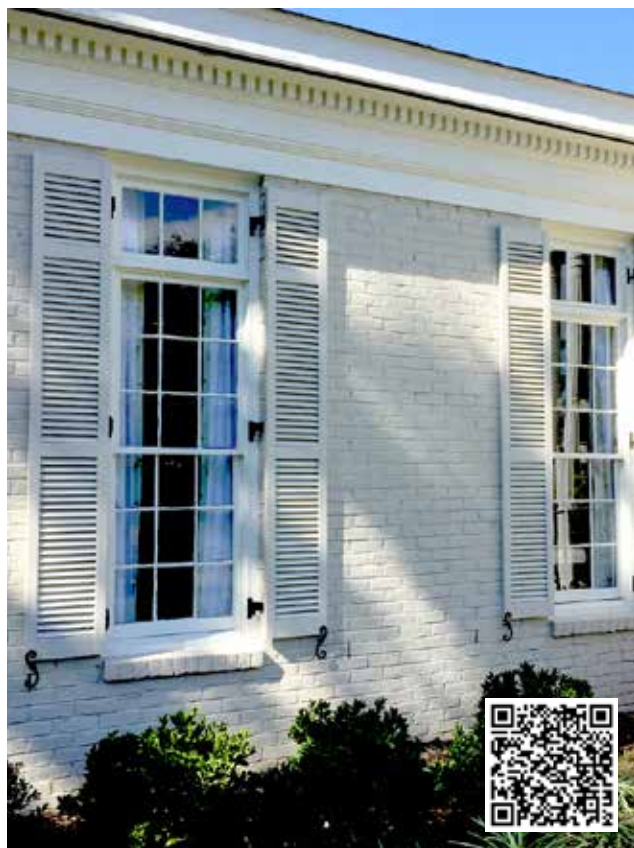
Standard Fixed Louver

_____ Louvered exterior shutters offer a traditional, classic aesthetic that has been a design staple since Ancient Greece.



Crafted to be as functional as they are beautiful, fixed louver shutters are designed to hang on functional hardware. Shutters are built to exact size to perfectly fit each window. Every feature can be specified: louver size, number and placement of cross rails, endless color options.

Beauty lives in the details of these shutters. The angles created by the hand placed louvers bend light and shadows into lines that enhance any facade. Functional hinge mounting adds a true beauty and 3rd dimension that shouts authenticity and function.



LEFT: Standard Fixed Louver

MIDDLE: DesignLine Fixed Louver

RIGHT: Standard Fixed Louver

TOP RIGHT: Premium Fiberglass Composite with 1-7/8" Louvers



DesignLine 1-7/8" Louver



Heavy Duty Fixed Louver

Fixed-Louver Shutter Options

	MAXIMUM WIDTH	MAXIMUM HEIGHT	MULTIPLE LOUVER OPTIONS	FLUSH STILE AND RAIL	BEADED STILE AND RECESSED RAIL	ADDITIONAL WOOD SPECIES	SHUTTER FRAME THICKNESS MODIFICATION	SHIP LAP	TRIM	HORNS	ARCH OR RAKE	FALSE CONTROL ROD	MOUSE HOLES
STANDARD	22	90		X				X	X	X	X	X	X
HEAVY DUTY	30	132			X	X	X	X	X	X	X	X	X
DESIGNLINE	30	132	X	X		X	X	X	X	X	X	X	X
PREMIUM FIBERGLASS COMPOSITE	30	108	X	X							LIMITED TO 6" DROP	X	X

MOVABLE LOUVER *SHUTTERS*

Movable louver shutters grace historic homes and new structures alike. An early design that evokes the historic charm of New England and Southern styled homes. The authenticity of the movable louver shutters and functional hardware bring a welcoming aesthetic of a slower and sweeter way of life.



A favorite of designers, movable louvers are often used to enclose porches and outdoor spaces to create a cottage feel while helping control the elements and privacy.

TOP: Heavy Duty Movable Louver
2-1/2" Louver

BOTTOM: Heavy Duty Movable
Louver 2-1/2" Louver

RIGHT: Heavy Duty Movable Louver
1-7/8" Louver





_____ Movable louvers are often hung on traditional windows and offer design options for outdoor living spaces where control over privacy, view, and the elements are required. Available in three louver sizes, these shutters are perfect for creating cozy porches or outdoor spaces.



LEFT: DesignLine 2-1/2" Louver with False Control Rod
MIDDLE: Heavy Duty Movable Louver with 2-1/2" Louver
RIGHT: DesignLine 2-1/2" Louver with False Control Rod



PANELED & COMBINATION SHUTTERS

Paneled shutters enhance any structure. Available in a variety of panel options. Flat panel, raised panel, double-sided raised panel, and v-groove panels - diagonal, vertical, and horizontal.





LEFT: DesignLine Fixed Louver/Panel Combination with 1-7/8" Louver

MIDDLE: Standard Flat Panel w/ Cutout

RIGHT: Standard Raised Panel

Flush Sanded Heavy Duty Offset
Flat Panel with Diagonal V-Groove





DesignLine Fixed Louver/Panel Combination
with 1-7/8" Louver and False Control Rods



As functional as they are beautiful. Paneled shutters are designed to hang on functional hardware. Shutters are built to the nearest 1/16th size to perfectly fit each window. Every feature can be specified: panel style, number and placement of cross rails, endless color options.



Paneled shutters have rail locations that are matched to the window's lock-rail and transom placement to create a complimentary aesthetic.

LEFT: Standard Raised Panel with Flat Offset Panel with V-Groove

MIDDLE: DesignLine 3 Panel with Small Middle

RIGHT: DesignLine Paneled with Arch



Panel Shutter Options											
	MAXIMUM WIDTH	MAXIMUM HEIGHT	NUMBER OF PANEL OPTIONS	FLUSH STILE AND RAIL	BEADED STILE AND RECESSED RAIL	ADDITIONAL WOOD SPECIES	SHUTTER FRAME THICKNESS MODIFICATION	SHIP LAP	TRIM	HORNS	ARCH OR RAKE
STANDARD	22	90	6	X				X	X	X	X
HEAVY DUTY	30	132	6		X	X	X	X	X	X	X
DESIGNLINE	30	132	6	X		X	X	X	X	X	X
PREMIUM FIBERGLASS COMPOSITE	30	108	4	X							X



BOARD & BATTEN *SHUTTERS*

Board and batten shutters are manufactured in a customizable design. The number of vertical boards can be specified along with batten placements, allowing this shutter to be tailored to match windows of all shapes and configurations.

Board and batten shutters offer a unique aesthetic sure to enhance cottage, farm house, French colonial and many other architectural styles.



TOP: Composite Board and Batten

BOTTOM LEFT: Arched Board and Batten

BOTTOM RIGHT: Board and Batten



Board and Batten with Z-board



Board and Batten



Board and Batten



Board & Batten Shutter Options

	MAXIMUM WIDTH	MAXIMUM HEIGHT	ADDITIONAL WOOD SPECIES	ARCH OR RAKE	Z-BOARD
WOOD	36	132	X	X	X
COMPOSITE	24	90		X	X

BAHAMA *SHUTTERS*

_____ Bahama shutters are regularly used to invoke a coastal cottage charm in a beach setting. Modern architectural styles also utilize this style to add color, depth and texture to modern facades. Top mounted bahama shutters may be used in various lengths to add a decorative element to porch structures as well as any window. The spandrels (top of porch) application and partial window coverage are a few of our favorite applications.



Shutter walls/blinds are a perfect solution to provide privacy or shading for outdoor spaces.

TOP: Heavy Duty Bahama

MIDDLE: DesignLine Spandrel with 1-7/8 Louver

BOTTOM: Heavy Duty Bahama





Premium Fiberglass Bahama





TOP: Heavy Duty Bahama Spandrel
BOTTOM: DesignLine Fixed Louver Bahama



Bahama Shutter Options									
	MAXIMUM WIDTH	MAXIMUM HEIGHT	MULTIPLE LOUVER OPTIONS	FLUSH STILE AND RAIL	ADDITIONAL WOOD SPECIES	SHUTTER FRAME THICKNESS MODIFICATION	TRIM	ARCH OR RAKE	FALSE CONTROL ROD
HEAVY DUTY	Varies	132		X	X	X	X	X	X
DESIGNLINE	Varies	132	X	X	X	X	X	X	X
PREMIUM FIBERGLASS COMPOSITE	60	108	X	X					X
HEAVY DUTY MOVABLE LOUVER	36	84	X	X	X	X	X		

CUSTOMIZATION

Custom shutters may be manufactured to specification or base products may be customized with arches, panel cutouts, false control rods, ship-lapped stiles, stile horns and/or custom sized components. Finishing options are available in an endless pallet of custom colors.



HARDWARE

Custom hardware offers beauty and functionality that handcrafted shutters deserve.



S-holdback with latch



Slide Bolt



S-Hook



Plate Pintel & Strap



L-hinge and Jamb Pintel



Plate Pintel & Strap



Jamb Pintel, Strap, & S-Hook



Hook and Latch



Copper Caps



Pushrods

INTERIOR WINDOW TREATMENTS

SOPHISTICATION & *DURABILITY*



Interior movable louver shutters are available in 1-7/8", 2-1/2", 3-1/2", and 4-1/2". Larger louvers allow for greater light and visibility. Finished with specified national brand colors or match to swatch for the perfect color.

TOP: 3-1/2" Interior Movable Louver

BOTTOM: 1-7/8" Interior Movable Louver



Interior Movable Louver
with 3-1/2" Louver



Interior Movable Louver with 3-1/2" Louver





While clean and crisp white has been a common feature of interior shutters, darker colors and natural stains have modernized this classic style.

SHUTTER SETS

The classic look of the interior bi-fold shutter set is sure to enhance the décor of any home or office. The 1-1/4" slats give this wood shutter set an old world charm. Designed to cover only the bottom half of the window or to be double hung.



TOP: Traditional Double Hung Shutter Set
LEFT: Bi-fold Shutter Set
MIDDLE: Traditional Double Hung Shutter Set
RIGHT: Traditional Double Hung Shutter Set



MILLWORK

LOUVERED & PANELED DOORS, COMBINATION DOORS, SCREEN DOORS



Single Section
Screen Over
2 Section Screen



2 Section Screen Over
2 Section Screen



2 Section Screen
Over 2 Section
Panel Combo



Screen with
Center Rail



1 Section Screen
Over 2 Section
Panel Combo



1 Section Screen
Over 1 Section
Panel Combo



Full View

_____ With timeless appeal, durable construction, and custom configuration, our patio and screen doors may be the most loved and remembered feature of your home or building.

TOP: Custom Interior Paneled Doors

BOTTOM: Exterior Screen Door





Vent with Custom Louver Spacing

VENTILATORS



Created from clear Western Red Cedar, ventilators are constructed for both style and function. Vents feature a rain stop louver designed to prevent wind driven rain from entering the vented space.



Cedar Ventilator
Octagonal with
Square Back



Cedar Ventilator
Octagonal with
Octagonal Back



Cedar Ventilator
Round with
Octagonal Back



Cedar Ventilator
Keystone Square Back
Flat Mould



Cedar Ventilator
Rectangular Octagonal
with Rectangular Back



Cedar Ventilator
Rectangular Round
with Rectangular Back



Cedar Ventilator
Rectangular Peak
with Rectangular Back



Cedar Ventilator
Rectangular



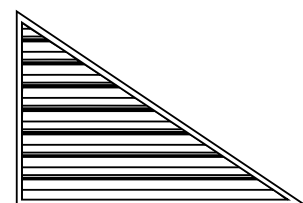
Cedar Ventilator
Half Round
with Rectangular Back



Cedar Ventilator
Half Round Dripsill
with Rectangular Back



Cedar Ventilator
Rectangular Dripsill



Cedar Ventilator
Triangular Gable Vent



Exterior Shutters / Interior Window Treatments / Shutter Hardware / Millwork

SOUTHERN SHUTTER COMPANY

1.800.344.8590

Sales@southernshutter.com

southernshutter.com